

optomap[®]

Retinal Exam

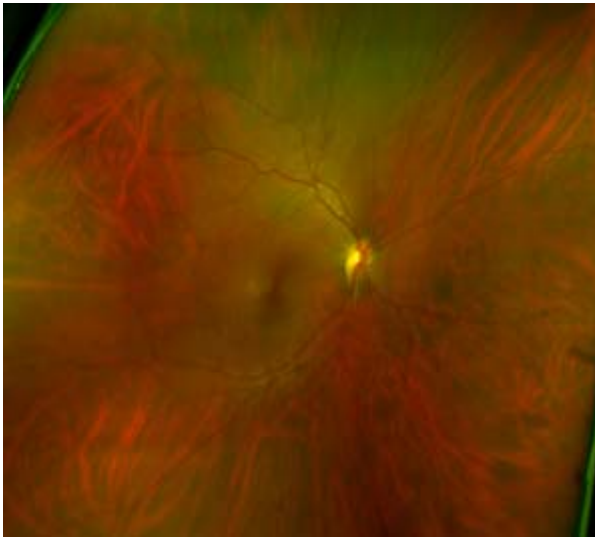
In our continued efforts to bring the most advanced technology available to our patients, Complete Family Vision Care is proud to announce the inclusion of the **optomap[®]** Retinal Exam as an integral part of your eye exam today.

Many eye problems can develop without warning and progress with no symptoms. Early on, you might not even notice any change in your vision. However, diseases such as macular degeneration, glaucoma, retinal tears or detachments, as well as other health problems such as diabetes and high blood pressure can be detected with a thorough exam of the retina. The retina is the part of your eye that catches the image of what you are looking at, similar to the film in a camera.

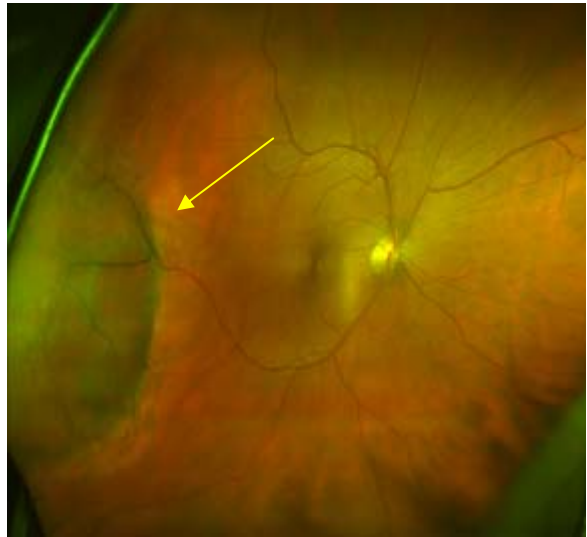
An **optomap[®]** Retinal Exam provides:

- A scan to confirm a healthy eye or, to detect the presence of disease.
- An overview or map of the retina, giving your doctor a more detailed view than can be achieved by other means.
- The opportunity for you to view and discuss the **optomap[®]** images of your eye with your doctor at the time of your exam.
- A permanent record for your medical file, enabling your Doctor to make important comparisons if potential problems show themselves at a future examination.

The **optomap[®]** Retinal Exam is fast, easy, and comfortable.



Healthy Retina



Unhealthy Retina

PLEASE NOTE: The **optomap[®]** Retinal Exam may be a “non-covered service” with your health plan, meaning that you would be responsible for the charges. Your Doctor strongly believes the **optomap[®]** Retinal Exam is an essential part of your comprehensive eye exam and highly recommends it for all patients once per year.