

### Do you have diabetes?

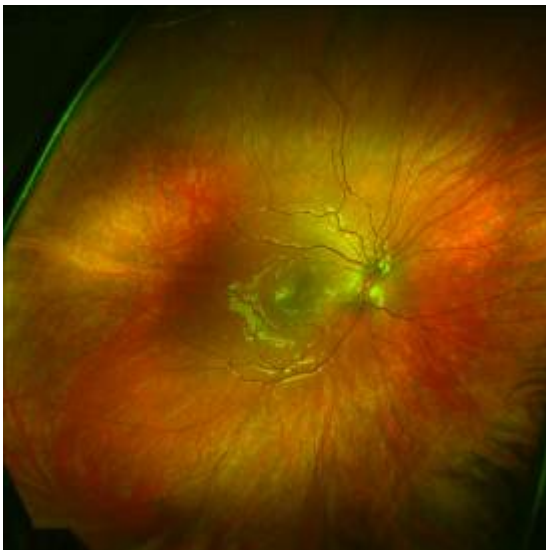
Dr. Havranek of Complete Family Vision Care recommends the **optomap®** Retinal Exam as an integral part of your eye exam today. The **optomap®** Retinal Exam provides your Doctor with a view of approximately 82% of your retina in a single capture and helps your doctor to determine if diabetes is affecting your visual health.

If you have diabetes, it is important to have your eyes checked regularly. Diabetic retinopathy (damage to the retina located at the back of your eye) is a common complication of diabetes. If left untreated, diabetic retinopathy may cause vision loss, or blindness in severe cases. Early stages of diabetic retinopathy may cause blurred vision, however there may be no symptoms at all. That is why early detection is crucial.

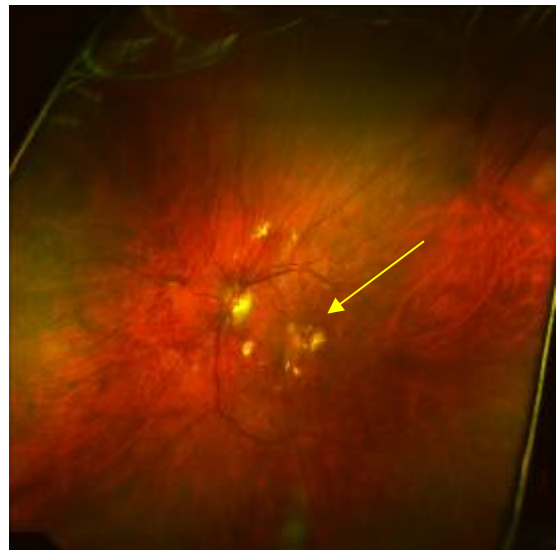
An **optomap®** Retinal Exam provides:

- A scan to confirm a healthy eye or, to detect the presence of disease.
- An overview or map of the retina, giving your Doctor a more detailed view that can't be achieved by other means.
- The opportunity for you to view and discuss the **optomap®** images of your eye with your Doctor at the time of your exam.
- A permanent record for your medical file, helping your Doctor to make important comparisons from year to year to note changes in your diabetic symptoms.

The **optomap®** Retinal Exam is fast, easy, and comfortable.



Healthy Retina



Diabetic Retinopathy

PLEASE NOTE: The **optomap®** Retinal Exam may be a “non-covered service” with your health plan, meaning that you would be responsible for the charges. However, depending on the findings this exam may be billable to your insurance. Your Doctor strongly believes the **optomap®** Retinal Exam is an essential part of your annual diabetic eye exam and highly recommends it for patients with diabetes at minimum of once per year.